

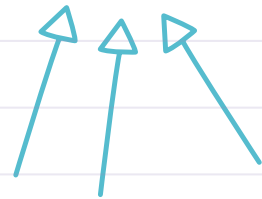
Your child should not be told to go home or stay home without a formal suspension. If the school system forces your child to transfer to an alternative school for disciplinary reasons, that counts as an expulsion.

Red Flags



Short Term 1-3 days
 Long Term 4-10 days
 Extended 11-44 days
 Expelled 45 days or longer

Suspension Key



If you think that your child has been unfairly suspended, contact one of the organizations below:

Child with disabilities:
 Disability Rights Maryland
 (410) 727-6352
 DisabilityRightsMD.org

Child without disabilities:
 Maryland Suspension Representation Project
 (443) 873- 3531
 MDSuspensionRep.org

Created by students in Wide Angle Youth Media in collaboration with Disability Rights Maryland and Maryland Suspension Representation Project. Supported by Open Society Institute-Baltimore.

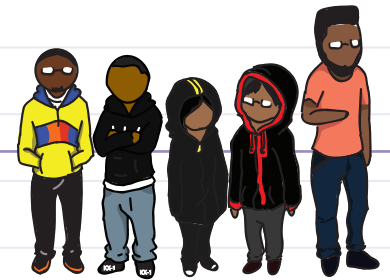
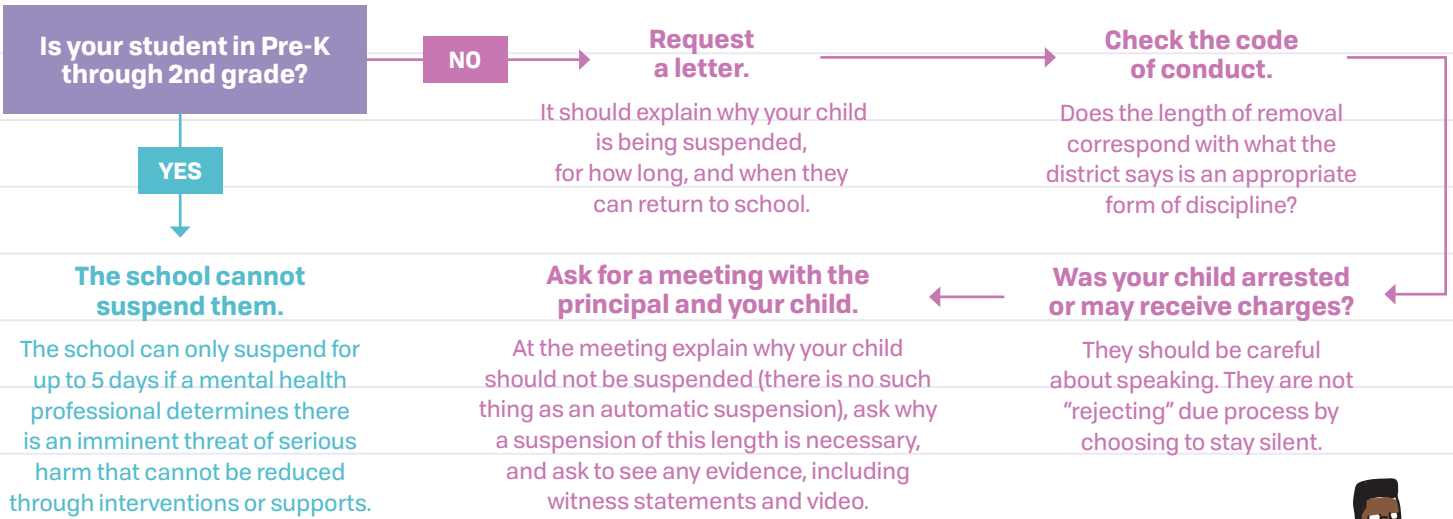


Know Your Child's Rights!

A guide to the suspension & expulsion rights of your child in Maryland.

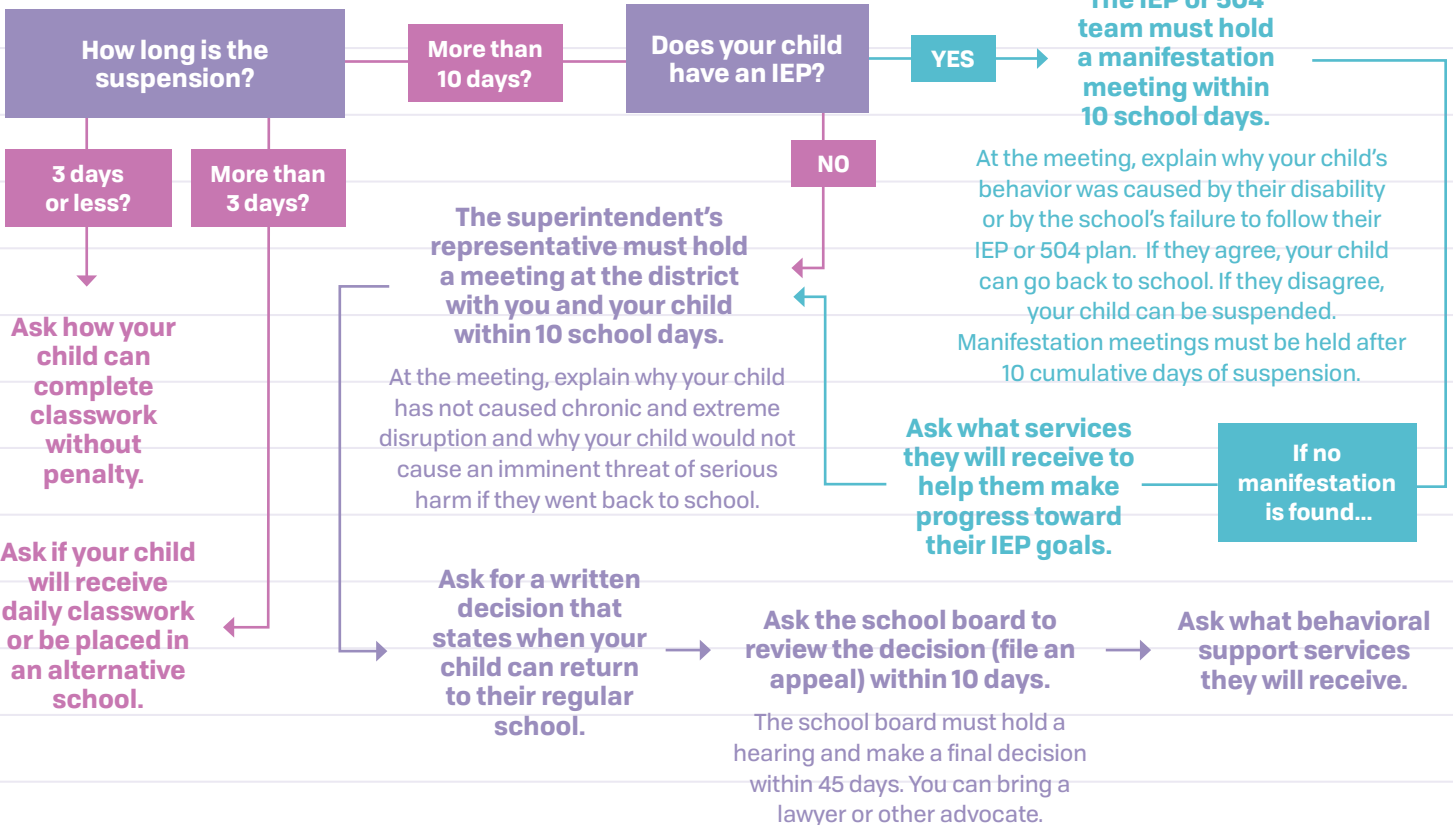


Sent Home, Suspended, or Expelled?



If the Suspension Goes Through

Ask what education services your child will receive during the suspension and who the contact person at the school is.



After the Suspension is Over

Your child has the right to go back to their regular school.